

Disaster Recovery Leadership Network

Disaster Recovery Leadership Network Communications Plan

May 2008



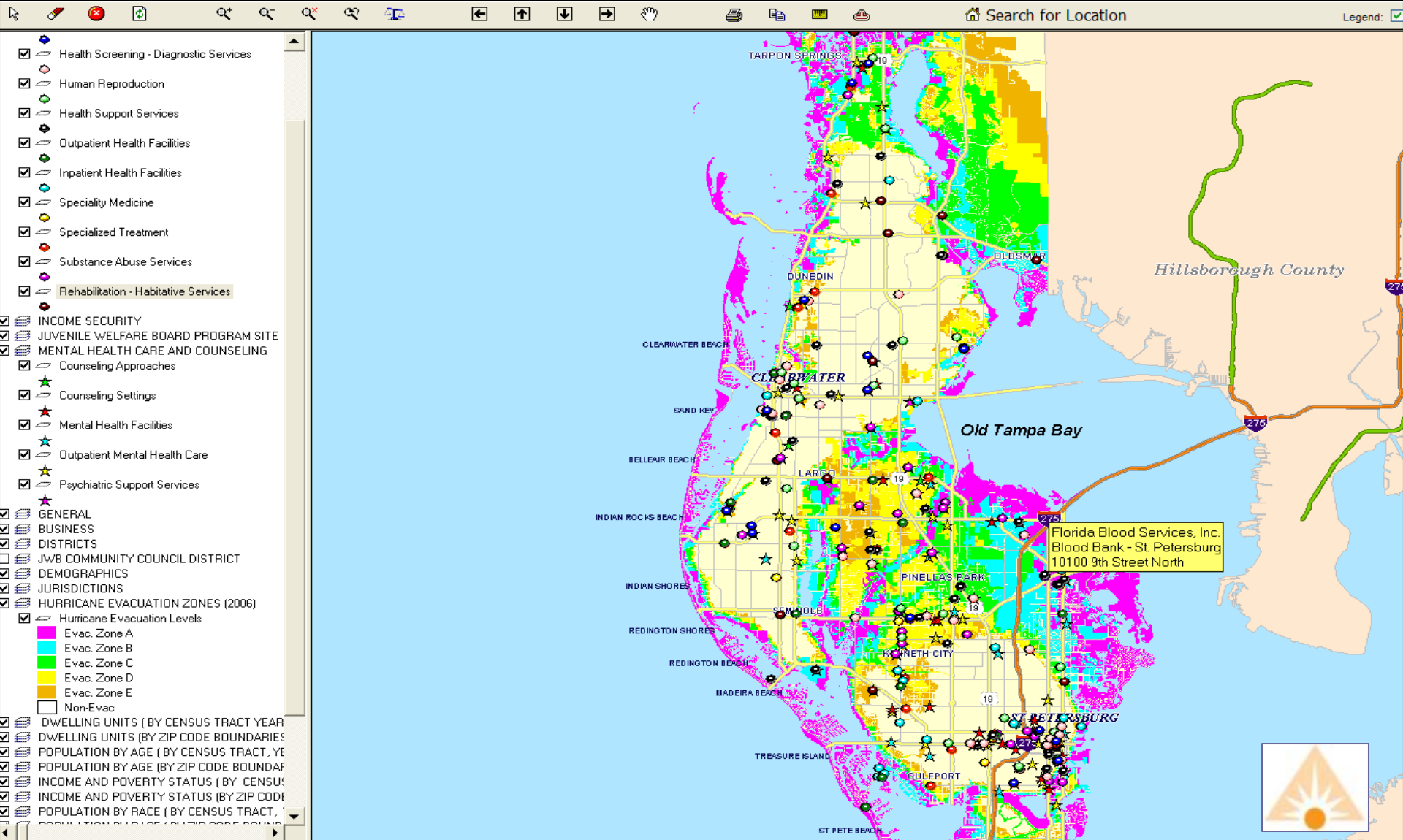
Health & Human
Services Coordinating
Council for Pinellas County

Why Do We Need A Plan?

Level C (Cat 3) will result in almost 450,000 people needing to evacuate Pinellas

Map Tip: As you zoom in the map, more layers will appear in legend.

Related Links: [Community Indicators Homepage](#)



What Can You and Your Agency Do?

Pre-Disaster Activities

- Continuity of Operations Plan (COOP)
 - Individual Emergency Preparedness Plan
 - Agency Emergency Preparedness Plan
- Agency Service Matrix
- Participate in Disaster Recovery Services Coalition

Progress



Health & Human Services

DRLN Disaster
Recovery
Leadership
Network

Communications Plan for Pinellas County

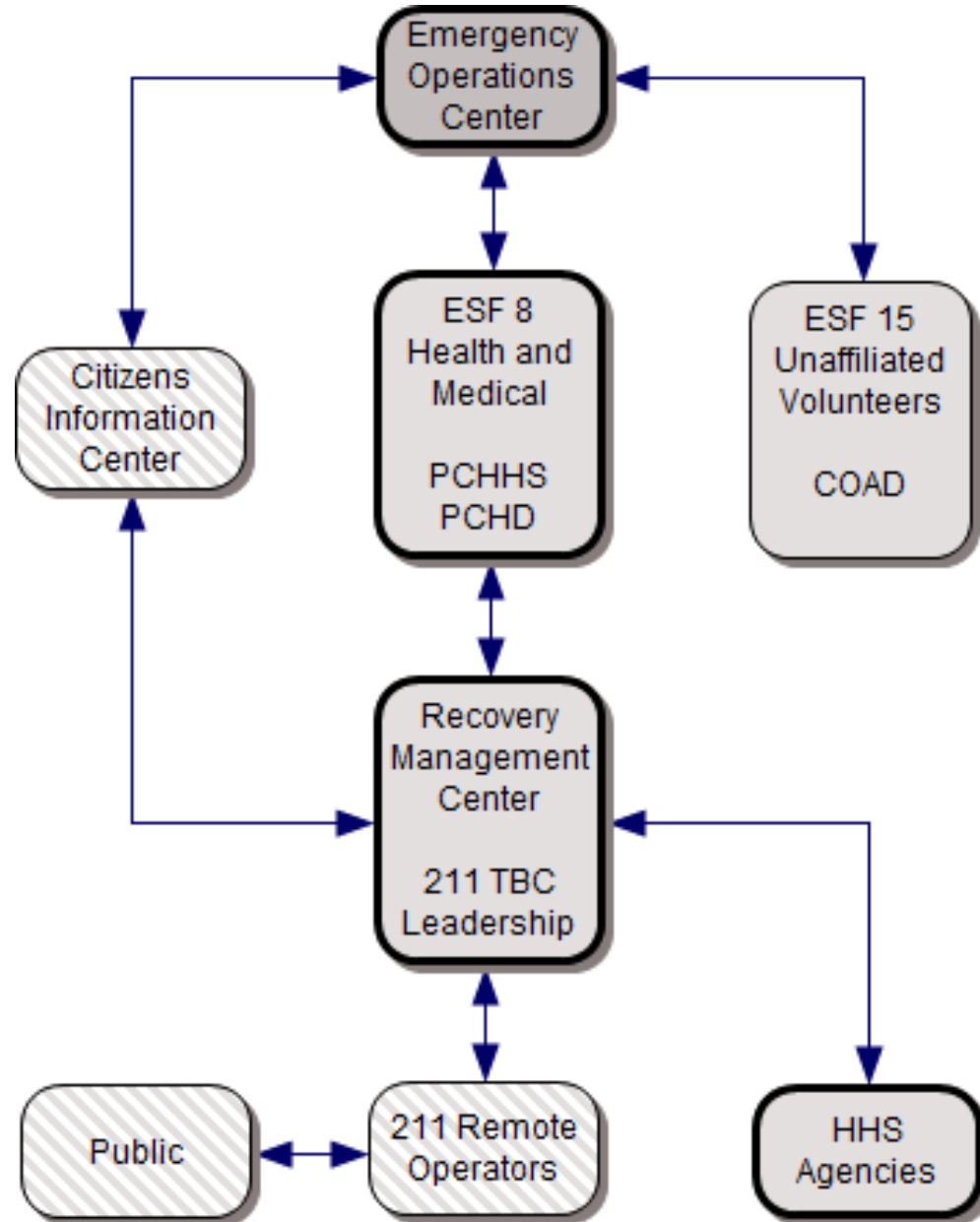


Purpose of Communications Plan

- Augment and support EM in health and human services response efforts (primarily human services) after natural disasters and emergencies including, but not limited to, hurricanes, tornadoes, high winds, and flooding.
- Ensure notification of participants when a disaster looms or has occurred
- Guide activation of the Recovery Management Center to achieve the objective of restoring services
- Recovery Management Center
 1. Communications to help manage service delivery
 2. Coordinates needed short term assistance



Coordination and Communication

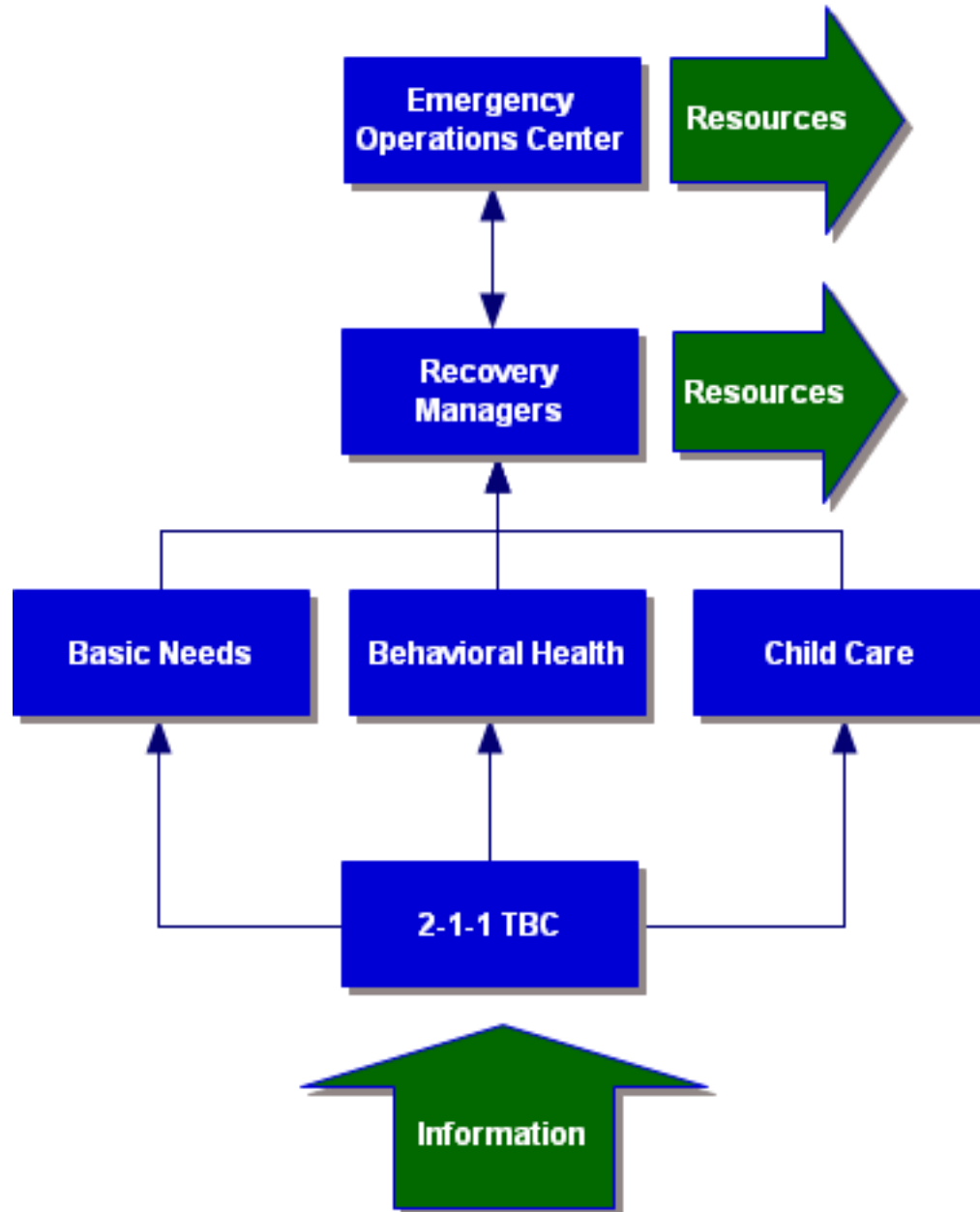


Agency Status Report

- Contact Information
- Human Service Area Details
 - Behavioral Health
 - Family Services
 - Child Care Services
 - Shelter / Specialized Residential Services
 - Temporary Housing
 - Information and Referral
 - Legal Assistance
 - Multilingual / Sign / Translation Services
- Facility and Staff Status



Recovery Management Center



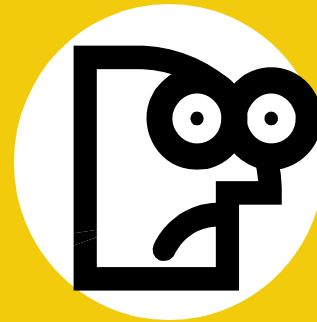
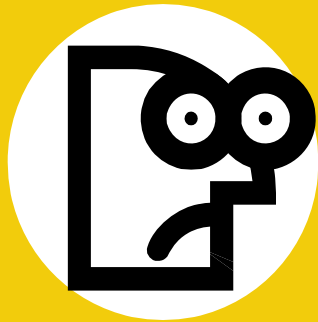
What Can You and Your Agency Do?

Post-Disaster Activities

- Continuity of Operation Plans (COOP)
 - Individual Emergency Preparedness Plan
 - Agency Emergency Preparedness Plan
- Agency Status Report



What time is it?



It's QUESTION TIME !!