



Health & Human
Services Coordinating
Council for Pinellas County

Disaster Recovery Leadership Network

Human Services Disaster Preparedness Summit

www.hhscc-pinellas.org

Disaster Recovery Leadership Network Communications Plan

www.hhsc-pinellas.org



Objectives

- Purpose of Communications Plan
- Components
 - Continuity of Operations Plan
 - Service Matrix
 - Agency Status Reports
 - Emergency Operation Center
 - Recovery Management Center
- Communications Flow
- Roles, Responsibilities, and Dependencies

But First – Let's Play

IDENTIFY THAT ACRONYM

ICS

TPRPC

ARC

POC

COAD

DRLN

CEMP

EOC

NIMS

HAZMAT

ESF

CERT

EM

DRC

SITREP

DAC

RMC

LTRO

DRSC

POD

CIC



AA 1st Step and Pledge

Anti-Acronym

We admit we are powerless over the use of acronyms—that our lives have become unmanageable

I solemnly swear to reduce my use of acronyms in my communications.



Purpose of Communications Plan

- Guide human service response efforts in Pinellas County, FL, after natural disasters and emergencies including, but not limited to, hurricanes, tornadoes, high winds, and flooding
- Ensure notification of staff identified to execute the plan, provide guidance in establishing the objective of restoring services, facilitating communication between participants, and coordinate short term assistance
- Complements Pinellas County Board of County Commissioners Comprehensive Emergency Management Plan (CEMP)

Components: Pre Disaster Activities

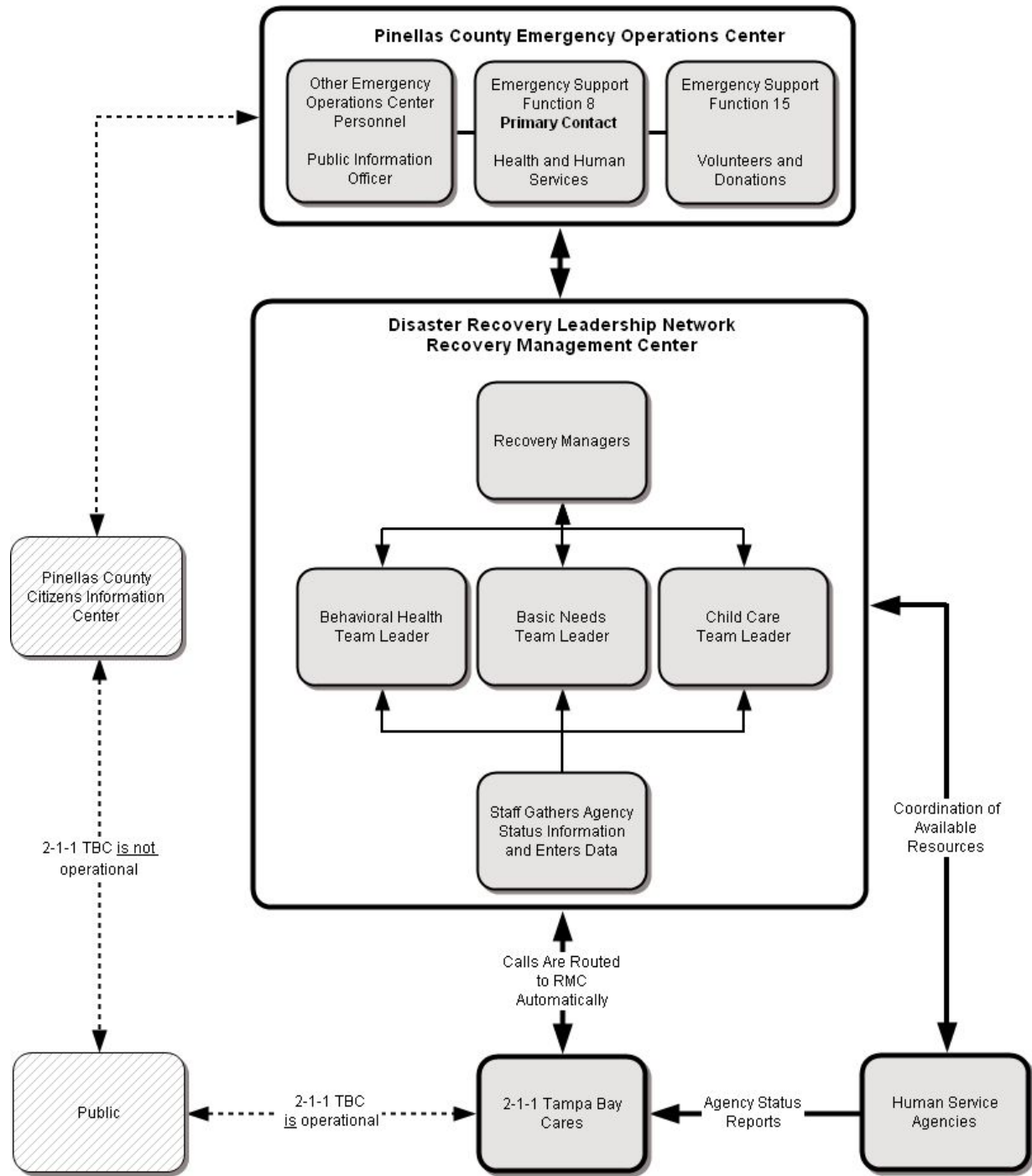
- Continuity of Operations Plan (COOP) - measures, taken pre-, during, and post-disaster, that are designed to maximize the operational capability of an agency – contingent on personal and disaster plans
- Scoop on COOP with worksheets can be downloaded from <http://www.hhsc-pinellas.org/COOP.htm>
- Disaster Recovery Services Coalition
- Ensure Service Matrix information for each of your major facilities is up-to-date

Components: When Disaster Strikes

- Agencies execute disaster plan, emphasizing first and foremost the safety of clients and staff
- Employees execute their personal disaster plans to ensure the safety of their loved ones

Components: Post Disaster Activities

- Agencies put Continuity of Operations Plan into effect
- Disaster Recovery Leadership Network activates the Recovery Management Center
- Agencies provide an Agency Status Report; call 2-1-1 from within Pinellas County and call 727-210-4211 if calling from another county
- Agencies update status as required



Emergency Operations Center



EMERGENCY
MEDICAL
SERVICES
EST. 1988 Health Medical

SUNSTAR
ESE 1 - Transportation
ESE 3 - Medical

Law Enforcement

STATE LAW
ENFORCEMENT
EST. 1988

MEDICAL
DIRECTOR
EST. 1988 Health Medical

PINELLAS
COUNTY
SHERIFF
EST. 1988

Human Services

HEALTH
SERVICES
EST. 1988

Operations

COMMUNITY
SERVICES
EST. 1988

Health Services

COMMUNITY
SERVICES
EST. 1988

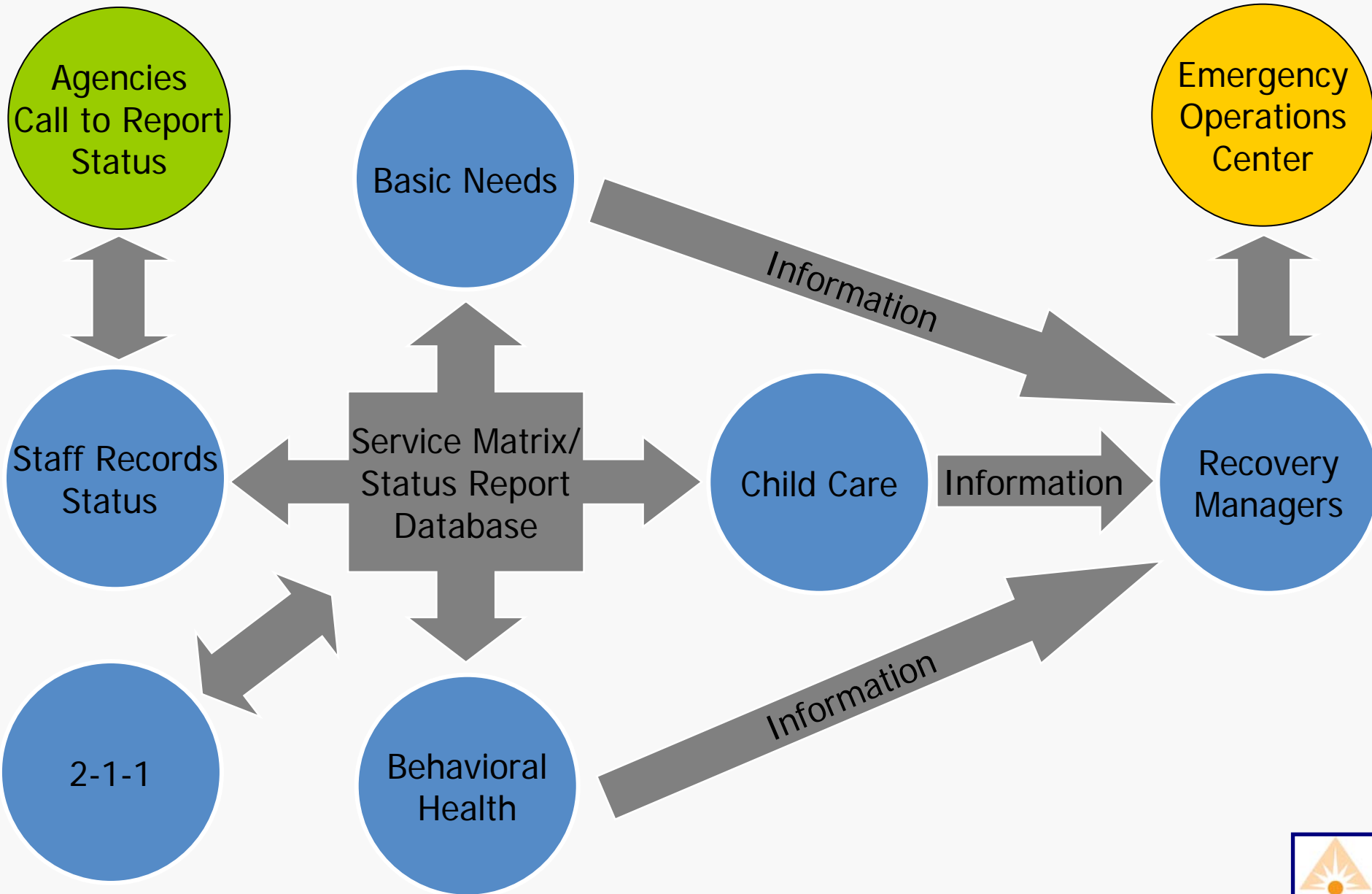


Two Critical Elements

- Chain of Command – Recovery Management Center works to augment and support Pinellas County Emergency Management
- Span of Control – Recovery Management Center works with human service agencies in Pinellas County

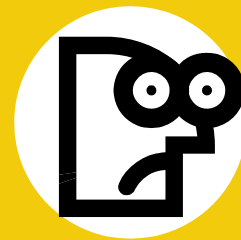
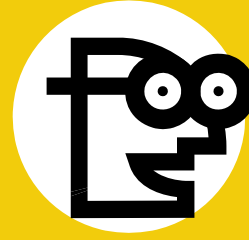
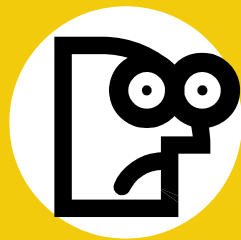
Recovery Management Center

Recovery Management Center



Direction for Human Services





It's QUESTION TIME!!